

EVINRUDE

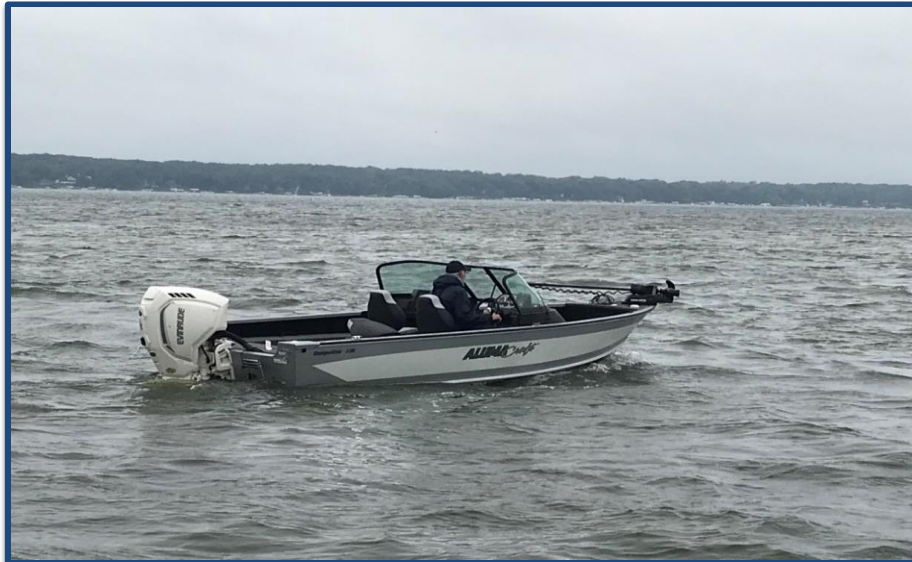
E-TEC

PERFORMANCE REPORT

BULLETIN #: 1326
ENGINE 1: K150WXF

BOAT TYPE: Multi-Species

DATE OF TEST: 9/21/2019



BRP US, Inc.
10101 Science Drive
Sturtevant, WI 52177
www.evinrude.com

ALUMACraft
FAMILIES. FISHING. FOREVER. EST. 1948

Alumacraft
315 W Saint Julien St
St. Peter, MN 56082
www.alumacraft.com

2020 Alumacraft Competitor 185

BOAT	
2020 Alumacraft Competitor 185	
Material	Aluminum
Length	18'8"
Beam	95"
Weight w/o Engine	1500 lbs
Maximum HP	175 HP
Fuel Capacity	34 Gallons
Transom Height	25
Steering	DPS

ENGINE	
Evinrude® E-TEC® G2™ 150 HP	
Engine Type	In-Line 3 Cyl.
Horsepower	150
Displacement	1.9 L
Induction	E-TEC DI
Operating Range	5000-6000 RPM
Weight	433 LBS Dry Weight
Gear Ratio	2.08:1

PROPELLER	
RX3™	
Material	Stainless Steel
Diameter/Pitch	14 1/2 in x 19 in
No. of Blades	3
Part Number	177354
Prop Vent Hole	Full Open
MOUNTING HEIGHT	
Hole Position	#2
Jack Plate	None

PERFORMANCE DATA				
RPM	MPH	GPH	MPG	RANGE
650	3.50	0.20	17.50	536
1000	5.00	0.40	12.50	383
1500	6.00	0.80	7.50	230
2000	7.50	2.00	3.75	115
2500	10.00	2.90	3.45	106
3000	19.50	3.75	5.20	159
3500	25.00	4.90	5.10	156
4000	30.00	6.40	4.69	143
4500	34.00	8.05	4.22	129
5000	39.00	9.80	3.98	122
5500	43.50	13.75	3.16	97
5675	44.50	13.80	3.22	99

Fuel Data Range (Miles) Based On 90% Fuel Capacity

TEST CONDITIONS	
Water Conditions	Slight Chop - 1' to 4'
Wind Velocity	12 MPH
Air Temperature	71 ° F
Fuel Load	32 Gallons
Weight	2 men & test gear

PERFORMANCE SUMMARY	
Top Speed	44.5 MPH
Best Fuel Efficiency	5.20 MPG For 159 Miles @ 19.50 MPH
Acceleration	Zero to 20 MPH 4.19 Seconds



NOTE: Data may vary due to changes in weather and water conditions, elevation, load and boat bottom conditions, boat, engine and propeller options and conditions, and operator ability. Speed and fuel were calculated by NMEA 2000 Gauges. Test performed and certified by BRP OEM Applications Engineering.

© 2019 BRP US Inc. All rights reserved. ™ ® and the BRP logo are Trademarks and Registered Trademarks of Bombardier Recreational Products Inc. or its affiliates.

EVINRUDE